

# ME 2A - Comparison of Mock Results – Sat 21<sup>st</sup> Aug 2021

## Papers: Maths 2A and English 2A

**Centres:** Ealing (EP9), Kingston (KP5)

**Maths 2A:** 50 minutes, Total 45 marks

**English 2A:** 50 minutes, Total 83 marks

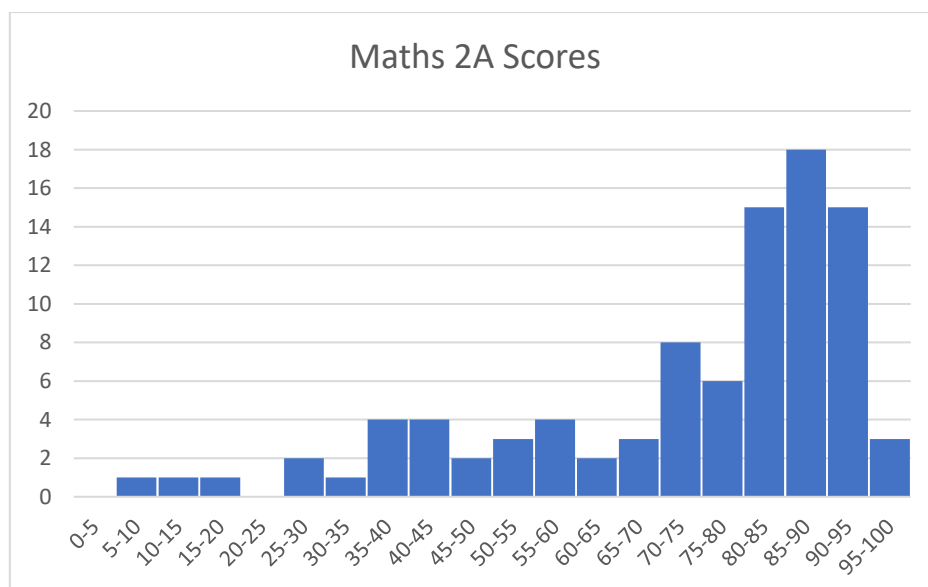
### Marks

Date	Location	Papers	Code	Maths 2A			English 2A		
				Highest Score	Lowest Score	Average	Highest Score	Lowest Score	Average
Sat 21 <sup>st</sup> Aug	Ealing	ME 2A	EP9	96%	13%	69%	95%	40%	75%
Sat 21 <sup>st</sup> Aug	Kingston	ME 2A	KP5	96%	9%	75%	99%	43%	80%
	Across both centres	ME 2A		96%	9%	73%	99%	40%	78%

### Percentile rankings

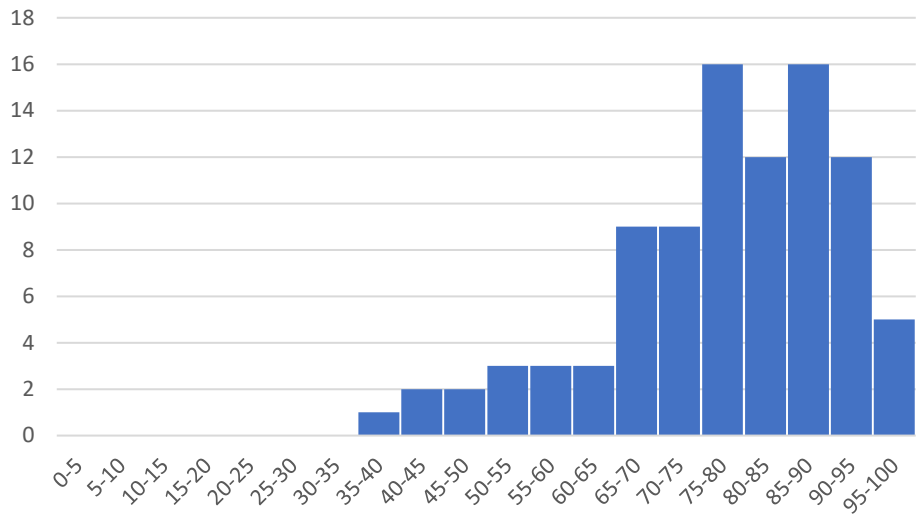
	Top 10%	Top 25%
<b>Maths 2A</b>	91.1%	87.8%
<b>English 2A</b>	91.6%	89.2%
<b>Both Papers</b>	90.2%	85.7%

### Mark Distribution

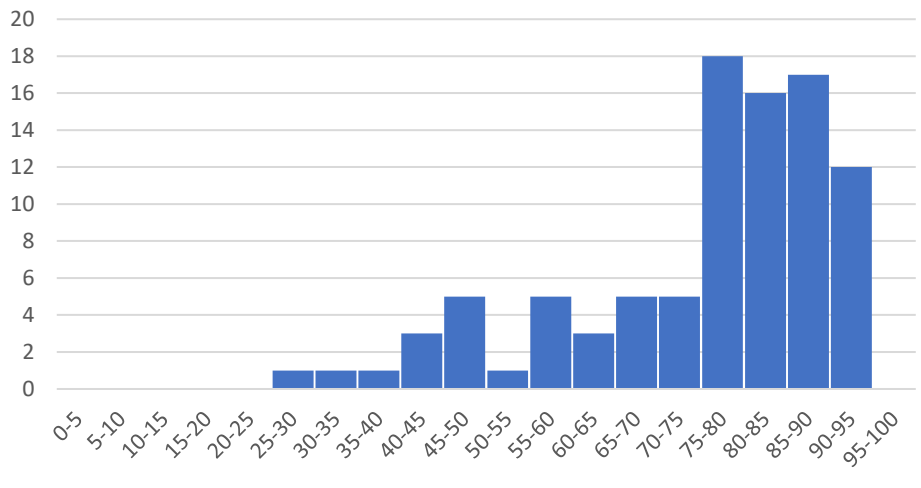




English 2A Scores



Overall Scores



## Rankings

Maths	
Rank	%
1	96%
2	96%
3	96%
4	93%
5	93%
6	93%
7	93%
8	93%
9	91%
10	91%
11	91%
12	91%
13	91%
14	91%
15	91%
16	91%
17	91%
18	91%
19	89%
20	89%
21	89%
22	89%
23	89%
24	87%
25	87%
26	87%
27	87%
28	87%
29	87%
30	87%

English	
Rank	%
1	99%
2	98%
3	96%
4	95%
5	95%
6	94%
7	94%
8	93%
9	92%
10	92%
11	92%
12	92%
13	92%
14	92%
15	90%
16	90%
17	90%
18	89%
19	89%
20	89%
21	89%
22	89%
23	89%
24	89%
25	88%
26	88%
27	88%
28	88%
29	87%
30	87%

Across Both Papers	
Rank	%
1	95%
2	95%
3	94%
4	93%
5	93%
6	93%
7	92%
8	91%
9	90%
10	90%
11	90%
12	90%
13	90%
14	89%
15	89%
16	88%
17	88%
18	88%
19	88%
20	88%
21	87%
22	87%
23	86%
24	86%
25	86%
26	85%
27	85%
28	85%
29	85%
30	85%

31	87%
32	87%
33	87%
34	87%
35	87%
36	87%
37	84%
38	84%
39	84%
40	84%
41	82%
42	82%
43	82%
44	82%
45	82%
46	82%
47	80%
48	80%
49	80%
50	80%
51	80%
52	78%
53	78%
54	76%
55	76%
56	76%
57	76%
58	73%
59	73%
60	73%
61	73%
62	73%
63	71%
64	71%
65	71%

31	87%
32	87%
33	86%
34	84%
35	84%
36	84%
37	83%
38	83%
39	83%
40	83%
41	82%
42	81%
43	81%
44	81%
45	81%
46	80%
47	80%
48	80%
49	80%
50	80%
51	78%
52	78%
53	78%
54	78%
55	78%
56	77%
57	77%
58	77%
59	77%
60	76%
61	76%
62	75%
63	75%
64	73%
65	73%

31	84%
32	84%
33	83%
34	83%
35	83%
36	82%
37	82%
38	82%
39	81%
40	81%
41	81%
42	81%
43	81%
44	80%
45	80%
46	80%
47	80%
48	79%
49	79%
50	79%
51	79%
52	79%
53	78%
54	78%
55	78%
56	78%
57	78%
58	77%
59	76%
60	76%
61	76%
62	76%
63	76%
64	74%
65	72%

66	69%
67	67%
68	67%
69	64%
70	62%
71	58%
72	58%
73	56%
74	56%
75	53%
76	53%
77	51%
78	49%
79	47%
80	42%
81	42%
82	40%
83	40%
84	38%
85	36%
86	36%
87	36%
88	33%
89	27%
90	27%
91	16%
92	13%
93	9%

66	72%
67	72%
68	71%
69	71%
70	71%
71	70%
72	70%
73	69%
74	69%
75	69%
76	67%
77	67%
78	65%
79	65%
80	63%
81	63%
82	61%
83	59%
84	59%
85	59%
86	53%
87	53%
88	53%
89	47%
90	46%
91	43%
92	43%
93	40%

66	71%
67	70%
68	70%
69	70%
70	68%
71	67%
72	67%
73	67%
74	65%
75	64%
76	64%
77	60%
78	60%
79	59%
80	59%
81	57%
82	53%
83	49%
84	48%
85	47%
86	47%
87	45%
88	43%
89	42%
90	41%
91	35%
92	31%
93	27%

## Explanation of Data

- The average used here is the mean.
- When used here, the term “across both papers” refers to the average score that each student achieved across both papers.
- Percentile rankings show the score achieved by the student closest to the 10<sup>th</sup> and 25<sup>th</sup> percentile - essentially, the score needed to be in the top 10% or 25% of students that took this paper, or the top 10% or 25% of students across both papers.
- The mark distribution gives a visual representation of the rough marks achieved by the students taking the exam by showing how many students got each mark.
- The ranking shows the exact marks achieved by the students taking the exams, letting you see exactly how your child has done relative to other students.

# ME2A: - Comparison of Mock Results

Last 4 years (365 students)

Papers: English, Maths

**English:** 50 minutes, Total 83 marks

**Maths:** 50 minutes, Total 45 marks

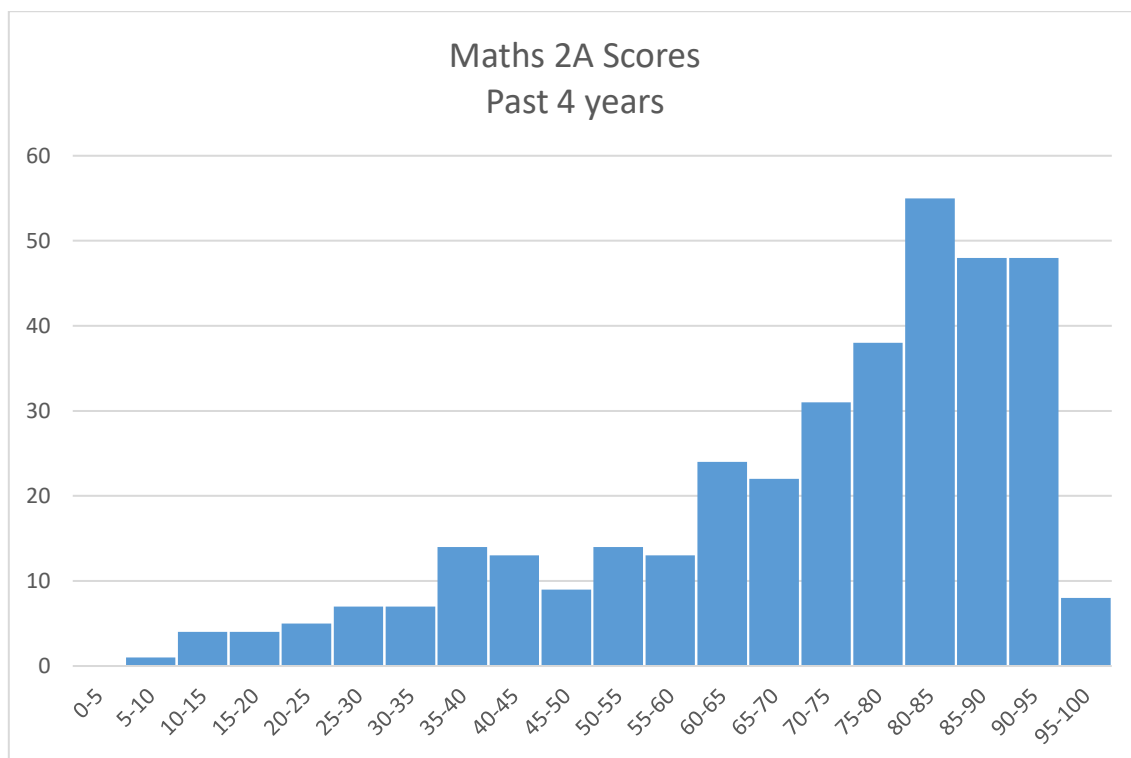
## Marks

Paper	Maths			English		
	Highest Score	Lowest Score	Average	Highest Score	Lowest Score	Average
ME2A	98%	9%	70%	99%	34%	78%

## Percentile rankings

	Top 10%	Top 25%
<b>Maths</b>	91.1%	86.7%
<b>English</b>	91.6%	86.7%
<b>Both Papers</b>	90.2%	85.2%

## Mark distribution







## Explanation of data

- The average used here is the mean.
- When used here, the term “Across Both Papers” refers to the average score that each student achieved across both papers.
- Percentile rankings show the score achieved by the student closest to the 10<sup>th</sup> and 25<sup>th</sup> percentile- essentially, the score needed to be in the top 10% or 25% of students that took this paper, or the top 10% or 25% of students across both papers.
- The mark distribution gives a visual representation of the rough marks achieved by the students taking the exam by showing how many students got each mark.
- The ranking shows the exact marks achieved by the students taking the exams, letting you see exactly how your child has done relative to other students.