

# ME 3B - Comparison of Mock Results – Sat 9<sup>th</sup> Oct 2021

## Papers: Maths 3B and English 3B

**Centres:** Ealing (EP10), Kingston (KP6)

**Maths 3B:** 50 minutes, Total 50 marks

**English 3B:** 50 minutes, Total 100 marks

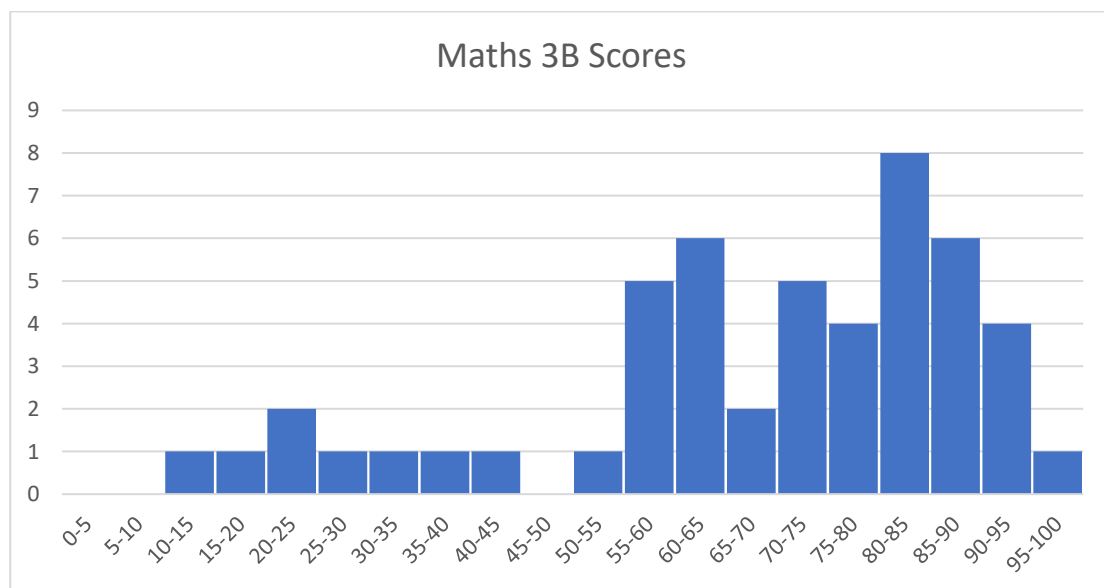
### Marks

Date	Location	Papers	Code	Maths 3B			English 3B		
				Highest Score	Lowest Score	Average	Highest Score	Lowest Score	Average
Sat 9 <sup>th</sup> Oct	Ealing	ME 3B	EP10	88%	18%	67%	81%	31%	62%
Sat 9 <sup>th</sup> Oct	Kingston	ME 3B	KP6	100%	14%	68%	86%	24%	66%
	Across both centres	ME 3B		100%	14%	67%	86%	24%	65%

### Percentile rankings

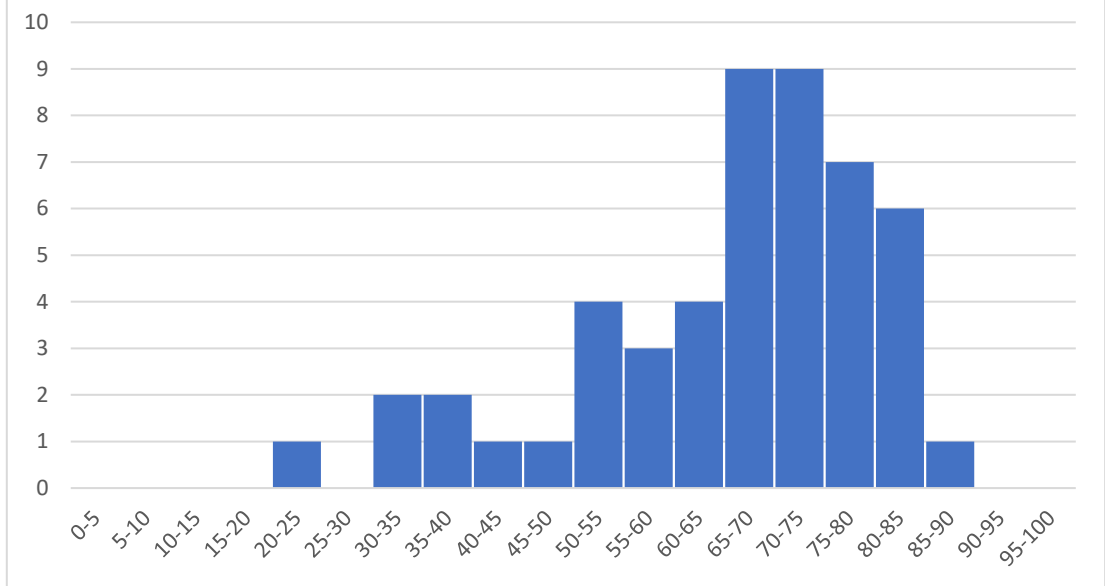
	Top 10%	Top 25%
<b>Maths 3B</b>	89.8%	84.0%
<b>English 3B</b>	81.0%	76.0%
<b>Creative</b>	88.0%	82.0%
<b>Non-Creative</b>	78.0%	72.0%
<b>Both Papers</b>	84.5%	78.1%

### Mark Distribution

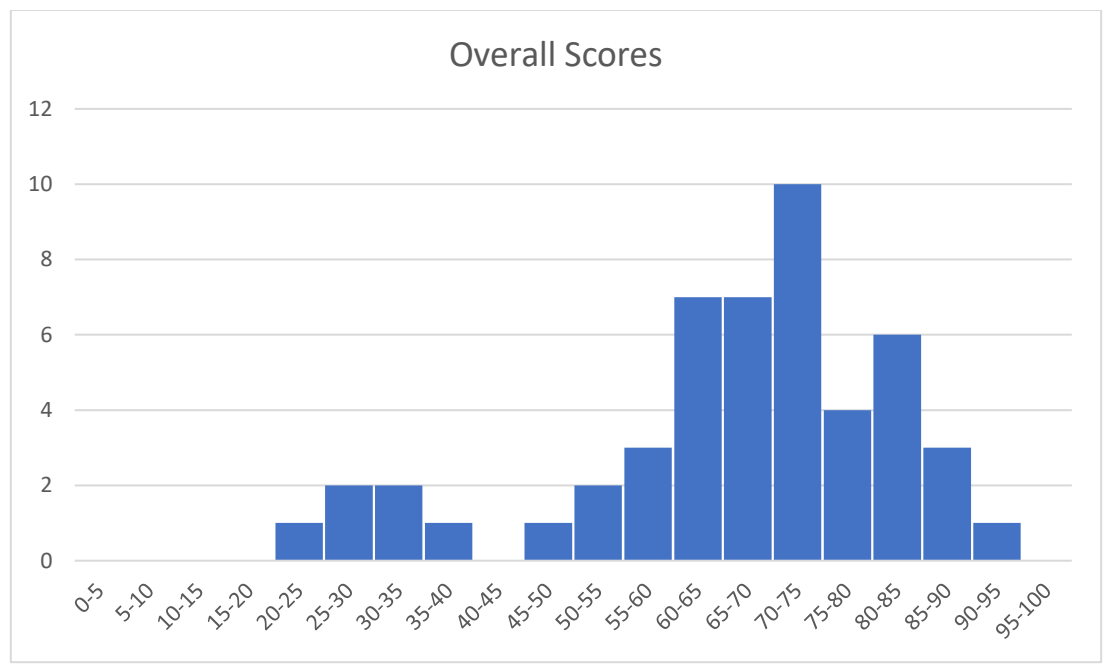




### English 3B Scores



### Overall Scores



## Rankings

Maths	
Rank	%
1	100%
2	92%
3	92%
4	90%
5	90%
6	88%
7	88%
8	88%
9	88%
10	88%
11	86%
12	84%
13	84%
14	82%
15	82%
16	82%
17	82%
18	80%
19	80%
20	78%
21	78%
22	76%
23	76%
24	74%
25	74%
26	72%
27	72%
28	70%

English	
Rank	%
1	86%
2	84%
3	84%
4	82%
5	81%
6	81%
7	81%
8	79%
9	78%
10	78%
11	77%
12	76%
13	76%
14	75%
15	74%
16	74%
17	72%
18	71%
19	71%
20	71%
21	70%
22	70%
23	70%
24	69%
25	69%
26	69%
27	68%
28	66%

Across Both Papers	
Rank	%
1	91%
2	87%
3	87%
4	85%
5	85%
6	84%
7	82%
8	82%
9	82%
10	80%
11	79%
12	79%
13	78%
14	76%
15	75%
16	74%
17	74%
18	74%
19	73%
20	73%
21	73%
22	73%
23	73%
24	71%
25	69%
26	69%
27	69%
28	69%

29	68%
30	66%
31	64%
32	62%
33	62%
34	62%
35	60%
36	60%
37	58%
38	58%
39	58%
40	58%
41	56%
42	54%
43	40%
44	36%
45	32%
46	26%
47	20%
48	20%
49	18%
50	14%

29	66%
30	66%
31	66%
32	65%
33	64%
34	61%
35	60%
36	60%
37	58%
38	57%
39	56%
40	53%
41	53%
42	51%
43	50%
44	46%
45	40%
46	39%
47	37%
48	33%
49	31%
50	24%

29	66%
30	66%
31	66%
32	65%
33	64%
34	64%
35	64%
36	62%
37	62%
38	61%
39	60%
40	58%
41	56%
42	55%
43	51%
44	46%
45	37%
46	33%
47	32%
48	28%
49	27%
50	25%

Creative	
Rank	%
1	86%
2	84%
3	84%
4	80%
5	78%
6	78%
7	76%
8	74%
9	74%
10	74%
11	72%
12	72%
13	72%
14	70%
15	70%
16	68%
17	68%
18	66%
19	66%
20	64%
21	64%
22	64%
23	64%
24	64%
25	62%
26	60%
27	60%
28	60%
29	58%
30	58%
31	56%
32	56%

Non Creative	
Rank	%
1	94%
2	94%
3	90%
4	90%
5	88%
6	88%
7	88%
8	88%
9	84%
10	84%
11	82%
12	82%
13	82%
14	82%
15	80%
16	80%
17	80%
18	78%
19	78%
20	78%
21	78%
22	76%
23	76%
24	76%
25	76%
26	76%
27	76%
28	76%
29	74%
30	74%
31	74%
32	70%



33	56%
34	56%
35	56%
36	56%
37	54%
38	54%
39	52%
40	52%
41	52%
42	50%
43	46%
44	46%
45	46%
46	42%
47	38%
48	30%
49	30%
50	28%

33	68%
34	68%
35	68%
36	66%
37	66%
38	66%
39	60%
40	58%
41	56%
42	50%
43	50%
44	50%
45	36%
46	34%
47	12%
48	10%
49	10%
50	10%



## Explanation of Data

- The average used here is the mean.
- When used here, the term “across both papers” refers to the average score that each student achieved across both papers.
- Percentile rankings show the score achieved by the student closest to the 10<sup>th</sup> and 25<sup>th</sup> percentile - essentially, the score needed to be in the top 10% or 25% of students that took this paper, or the top 10% or 25% of students across both papers.
- The mark distribution gives a visual representation of the rough marks achieved by the students taking the exam by showing how many students got each mark.
- The ranking shows the exact marks achieved by the students taking the exams, letting you see exactly how your child has done relative to other students.